

Table 1: 2008-2013 Goats & Science (# goats, # goat-days, # goat-days / acre etc.):

	2008	2009	2010	2011	2012	2013
# Goats	34	45	43-44	34	27***	30-32^
# Days	93	99	85	85	85	71
Total # Goat-days (includes re-browse)	3162	4446	3676	2890	2287	2212
Separate Acres Browsed	5.95	10.368	9.934	13.016	9.077	7.656
New acres by year	5.95	4.339	0	3.60	0.316	0.139
Average # Goat-days / Separate Acre	527	429	336.5	222.0	207.3	249.8
*, **, ***, ^: 2008 acres browsed in following years	5.95	5.95	5.516*	5.077**	5.595***	4.571^
, ^: Average # Goat-days / Acre for original 2008 acres	527	469	357	87.06	244.7	290.55^
Re-browse Acres (2 times / summer)	0	2.793	4.757	0	4.957	4.571
Browse + Re-browse	5.95	13.161	14.691	13.016	14.034	12.226
Average # Goat-days / Acre browsed + re-browsed	527	337.82	250	222.0	163.0	180.9
Scythed Acres	0.759	1.536	0	0	0	1.244
Combined All Treatment Acres	6.709	14.697	14.691	13.016	14.034	13.470

Figure 4A from the 2013 Baatany Goat Project Final Report: changes in graminoid (combined grasses, sedges, & rushes) absolute % cover 2008-2013 for Browse, Control (non-browse), & Other (already good Grassy Bald) plots:

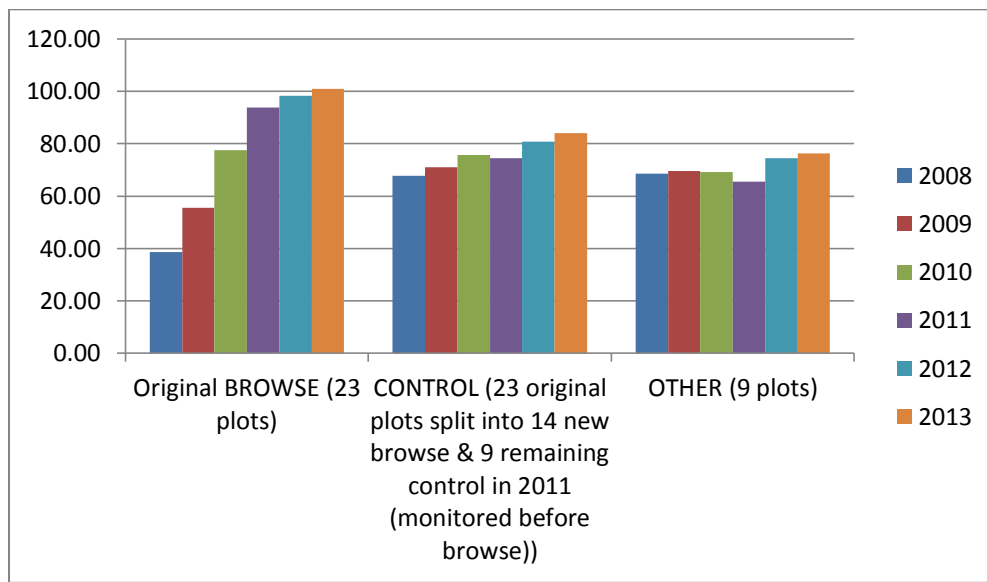


Figure 3A: 2008-2013 Bar Graph by Plant Type / Species Group in the 23 Original Browse Plots. Note that graminoids reached 93.74% absolute cover by 2011, 98.25% by 2012, and 100.96% by 2013.

